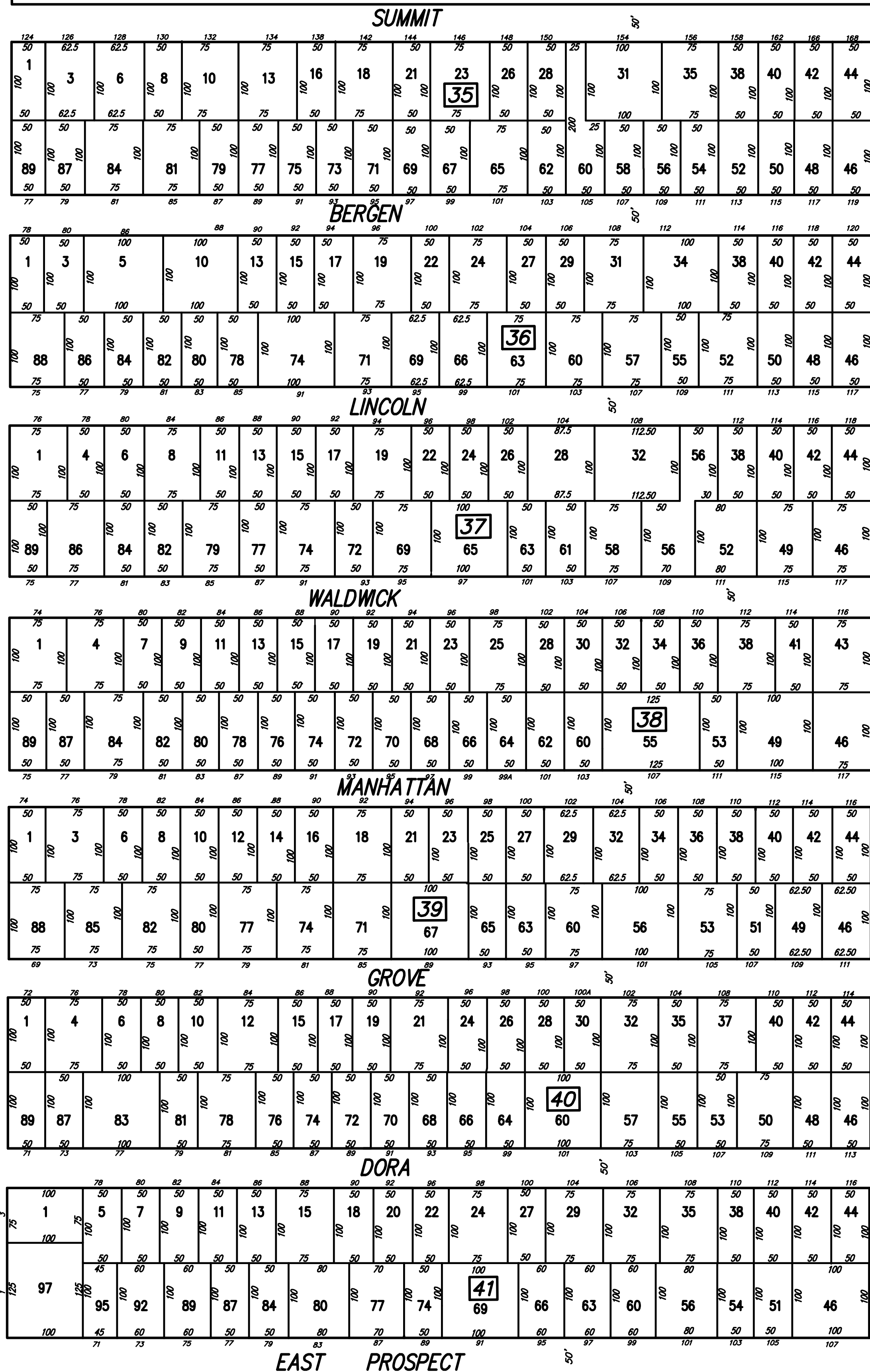
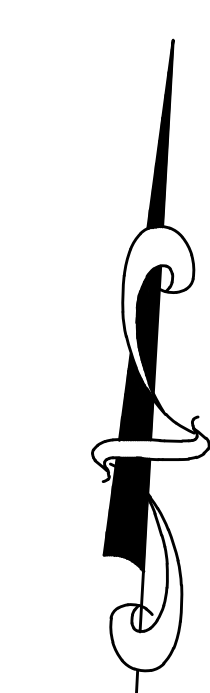
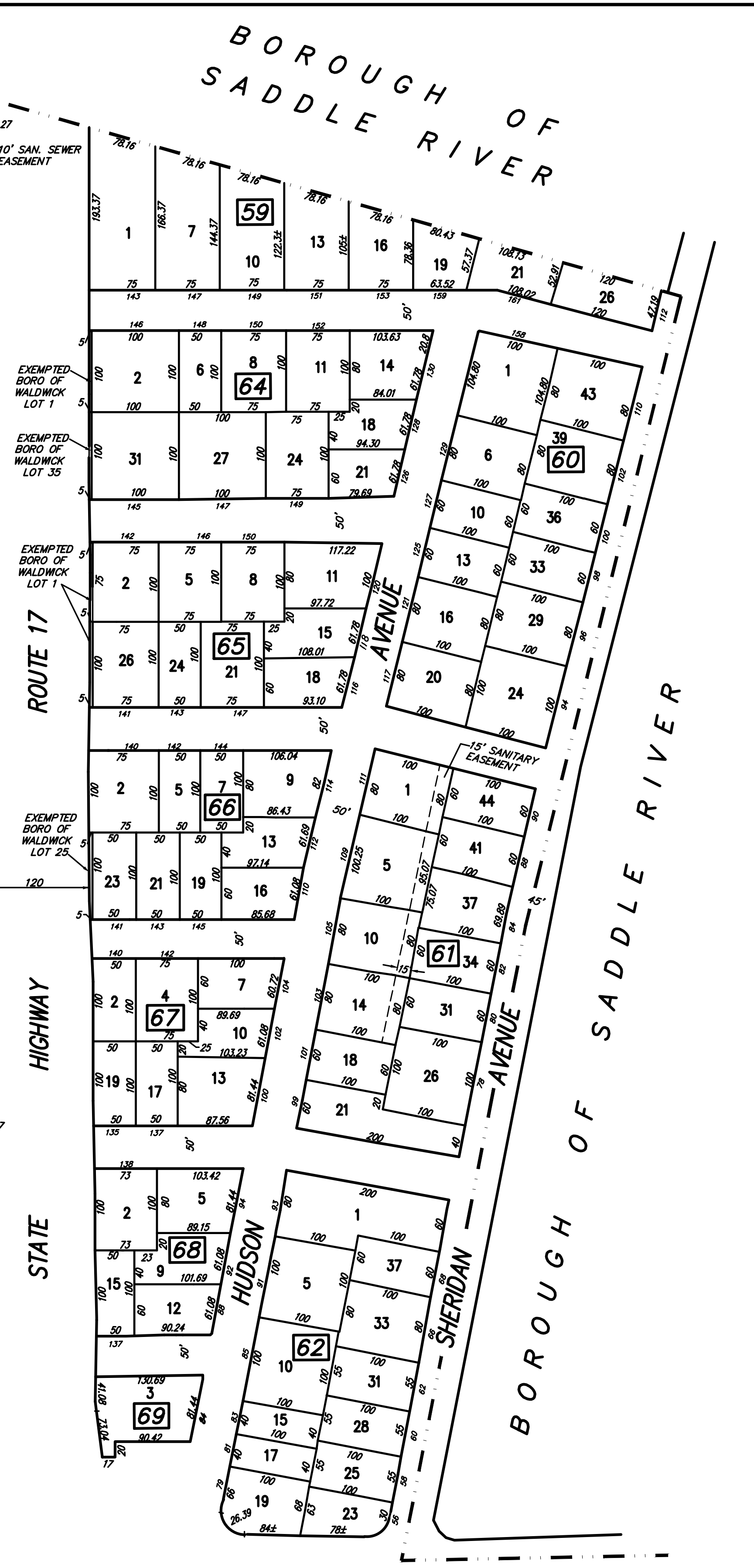
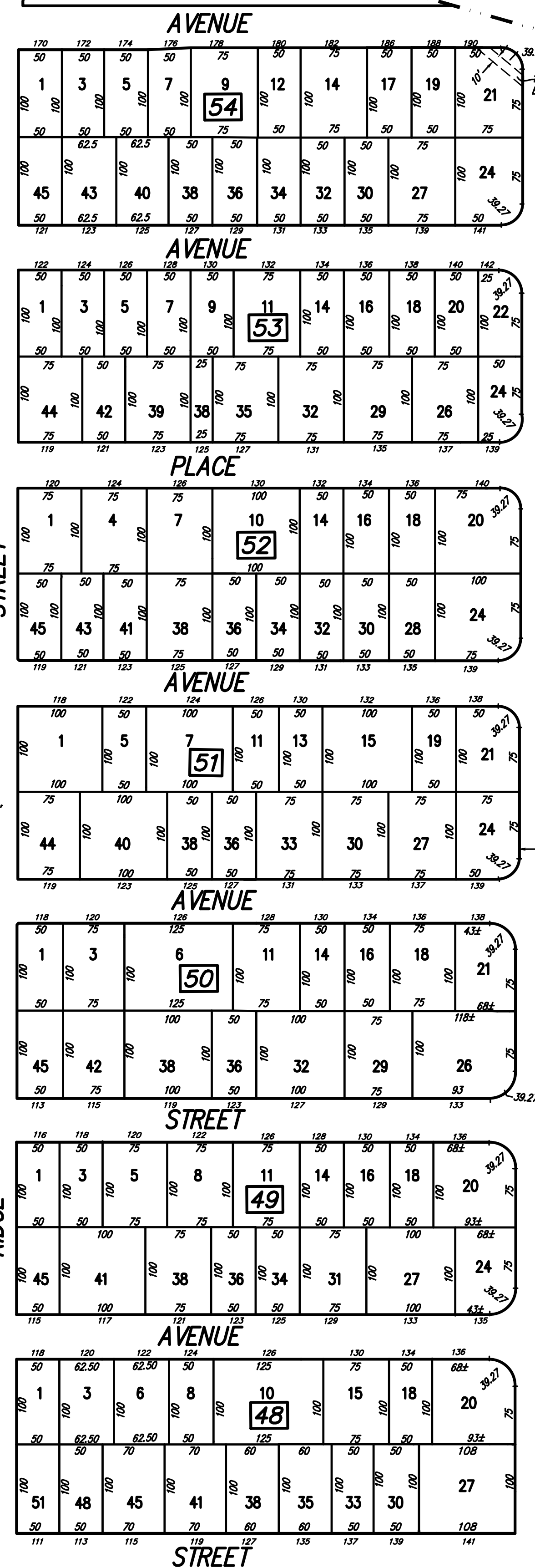


SHEET 4



SHEET 2



SHEET 6
SUMMIT AVE.
BERGEN AVE.
LINCOLN PL.
WALDWICK AVE.
GROVE ST.
DORA AVE.
NORTHAM STREET

REVISIONS		
DATE	NAME	LIC. No.
03/22/06	KENNETH J. STIGNER	GS34493
07/01/08	KENNETH J. STIGNER	GS34493
02/16/10	KENNETH J. STIGNER	GS34493
07/29/10	KENNETH J. STIGNER	GS34493

"This sheet has been redrawn using Computer Aided Drafting/Design (CAD/D) based on the map prepared by Boswell Engineering dated June 1997.

"This tax map supercedes the tax map approved on JUNE, 1997"

TAX MAP
BOROUGH of WALDWICK
BERGEN COUNTY, NEW JERSEY
SCALE: 1"= 100' DATE: JUNE 2002
KENNETH J. STIGNER, L.S.
N.J. LIC. No. GS34493
Stantec Consulting Services, Inc.
365 W. Passaic St., Rochelle Park, N.J. 07662