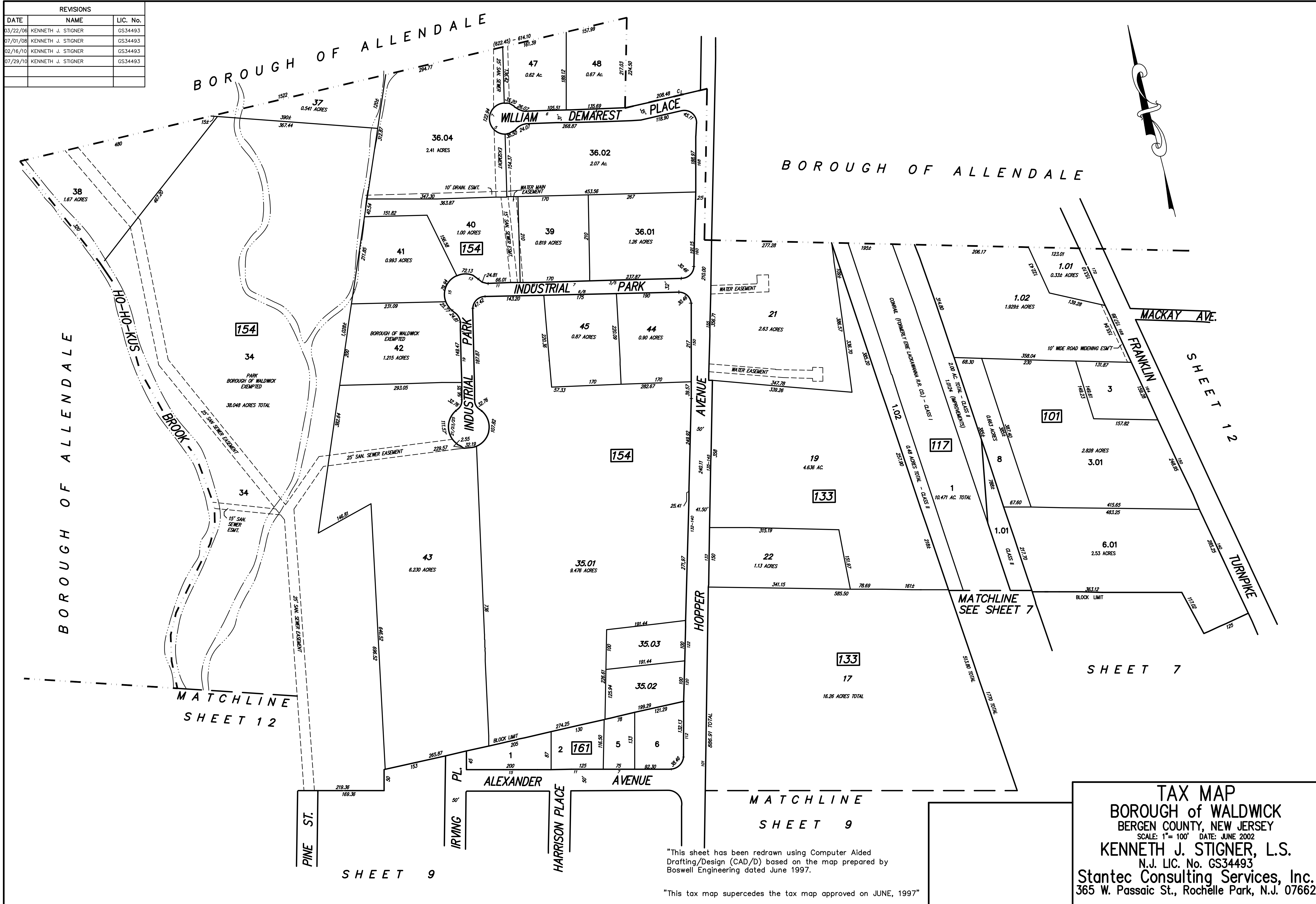


REVISIONS		
DATE	NAME	LIC. No.
03/22/06	KENNETH J. STIGNER	GS34493
07/01/08	KENNETH J. STIGNER	GS34493
02/16/10	KENNETH J. STIGNER	GS34493
07/29/10	KENNETH J. STIGNER	GS34493



"This sheet has been redrawn using Computer Aided Drafting/Design (CAD/D) based on the map prepared by Boswell Engineering dated June 1997.

"This tax map supercedes the tax map approved on JUNE, 1997"

**TAX MAP**  
**BOROUGH of WALDWICK**  
 BERGEN COUNTY, NEW JERSEY  
 SCALE: 1" = 100' DATE: JUNE 2002  
**KENNETH J. STIGNER, L.S.**  
 N.J. LIC. No. GS34493  
**Stantec Consulting Services, Inc.**  
 365 W. Passaic St., Rochelle Park, N.J. 07662